

FAQs LOWER VISIBILITY TICKETS

Circuit de Barcelona-Catalunya has a selection of seats classified as "lower visibility tickets" for the FORMULA 1 GRAN PREMIO DE ESPAÑA 2024.

The grandstands with this type of seating, which offer more limited visibility, are the following:

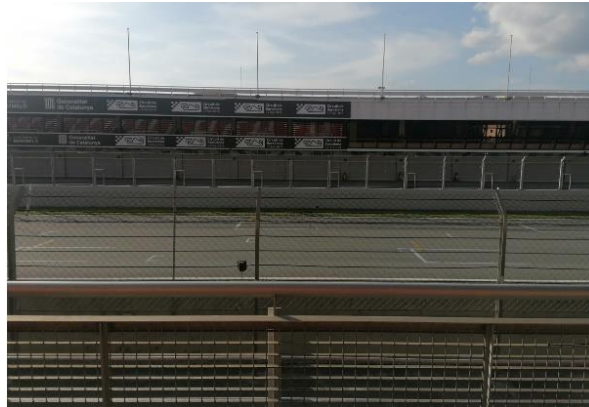
- Main Grandstand
- Grandstand J
- Grandstand K
- Grandstand E
- Grandstand F
- Grandstand B
- Grandstand C

Below, you can find examples of how each of the grandstands are affected, with the obstacle varying depending on the seat purchased.

MAIN GRANDSTAND

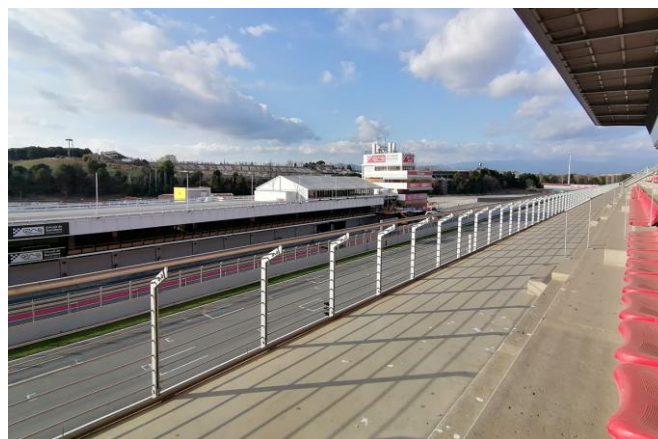
ROW 1

Obstacle: Track protection fencing. The obstacle partially obstructs visibility.



ROW 13

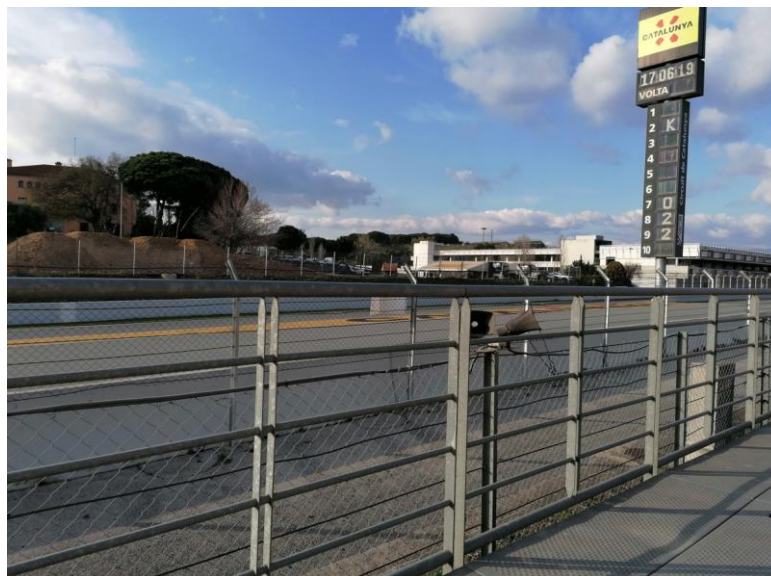
Obstacle: Protective fencing. The obstacle relatively obstructs the visibility of the track. Its main purpose is to ensure the safety of the public in the Higher Section of the Main Grandstand.



GRANDSTAND J

ROW 1

Obstacle: Double protective fencing. There are two protective railings, the first one guarantees the safety of all spectators in the grandstand, and the second one is the track protection fence. There are also some other obstacles such as a loudspeaker or a marshal's stand.



GRANDSTAND K

ROWS 1 AND 2

Obstacle: Double protective fencing. There are two protective railings, the first one guarantees the safety of all spectators in the grandstand, and the second one is the track protection fence.



ROWS 12 AND 13

Obstacle: Protective railing. The obstacle relatively obstructs the visibility of the track. Its main purpose is to ensure the safety of the public in the Grandstand.



GRANDSTAND E

ROWS 1 AND 2

Obstacle: Double protective fencing. There are two protective railings, the first one guarantees the safety of all spectators in the grandstand, and the second one is the track protection fence.



ROWS 12 AND 13

Obstacle: Protective railing. The obstacle relatively obstructs the visibility of the track. Its main purpose is to ensure the safety of the public in the Grandstand.



GRANDSTAND F

ROWS 1 AND 2

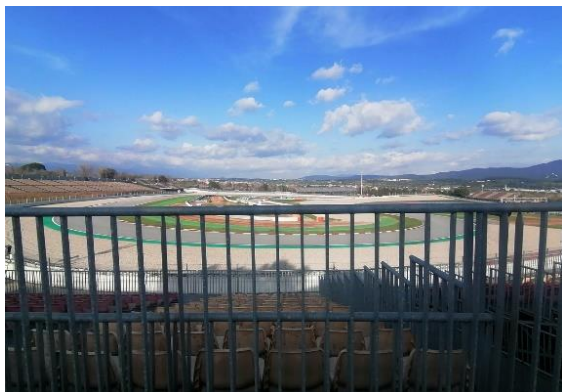
Obstacle: Double protective fencing. There are two protective railings, the first one guarantees the safety of all spectators in the grandstand, and the second one is the track protection fence.



GRANDSTAND B

ROWS 1 AND 2

Obstacle: Transverse railing affecting all of rows 1 and 2. The obstacle is relative depending on the height of the attendant.



GRANDSTAND C

ROW 1

Obstacle: Protective railing. The obstacle relatively obstructs the visibility of the track. Its main purpose is to ensure the safety of the public in the Grandstand.



ROW 13

Obstacle: Protective railing. The obstacle relatively obstructs the visibility of the track. Its main purpose is to ensure the safety of the public in the Grandstand.

